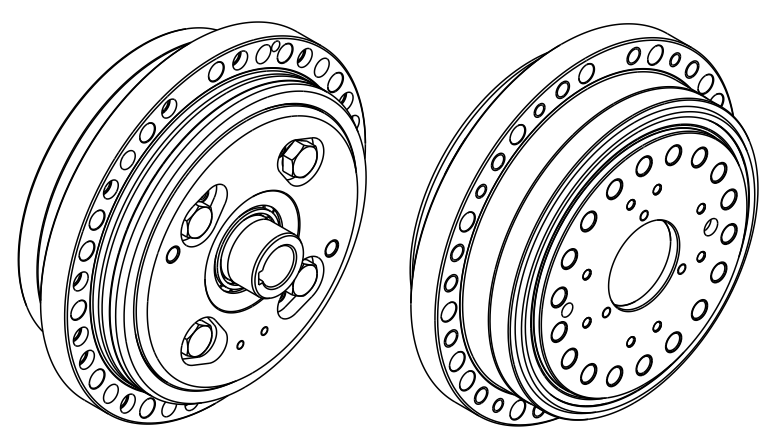
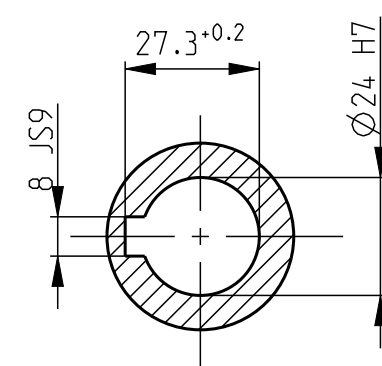
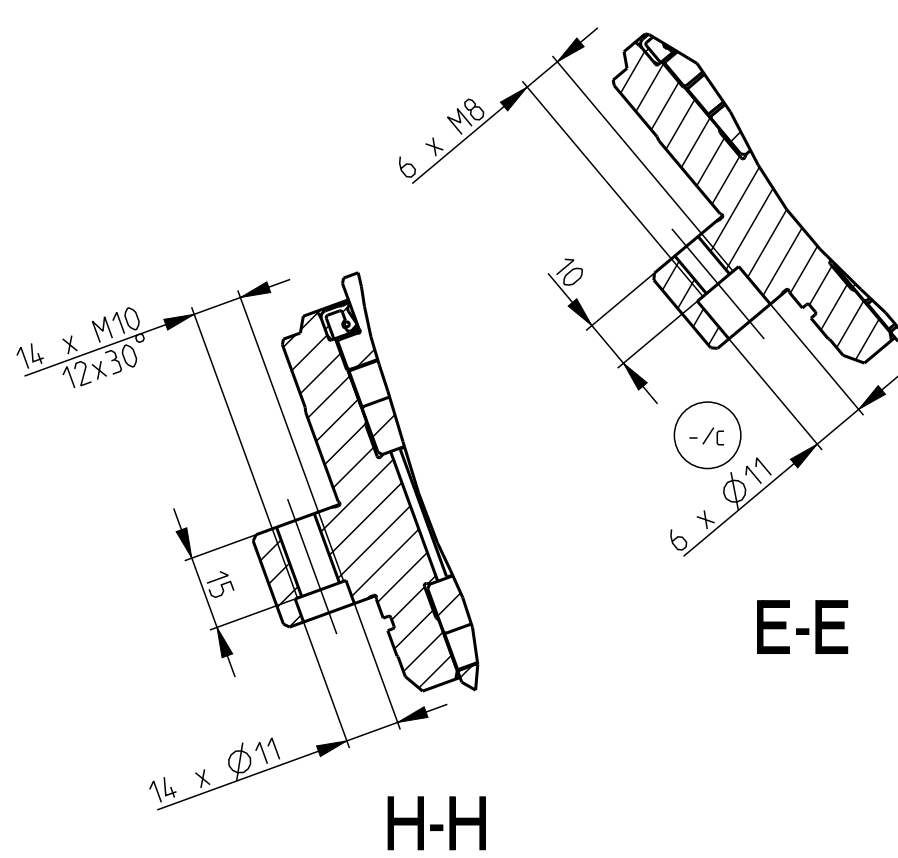
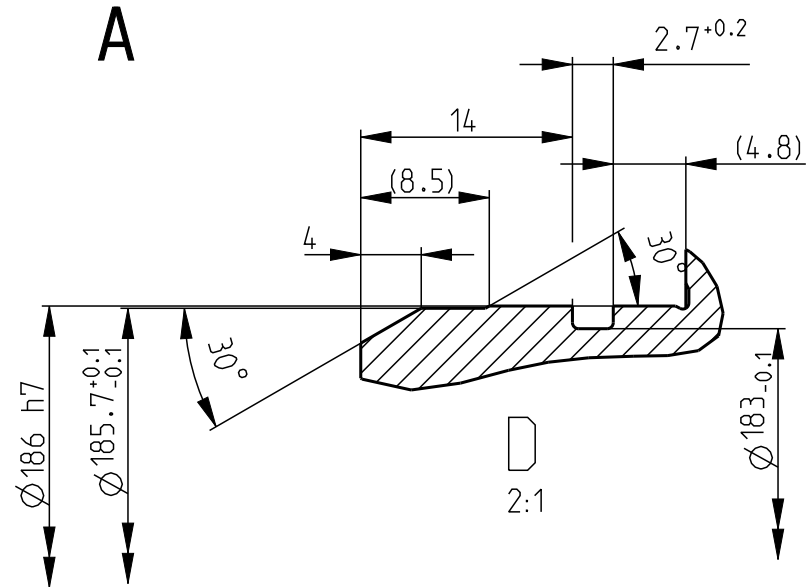
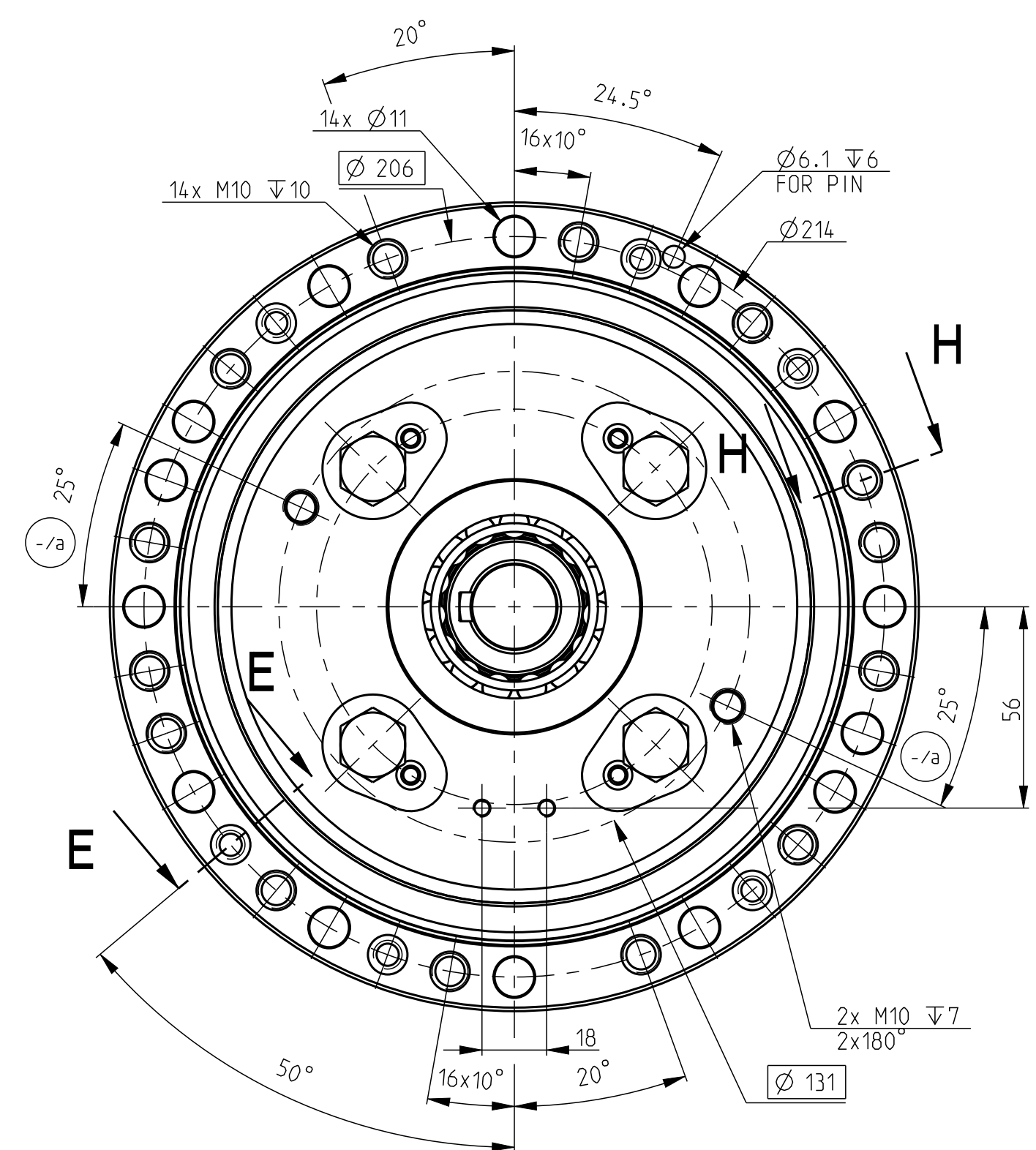
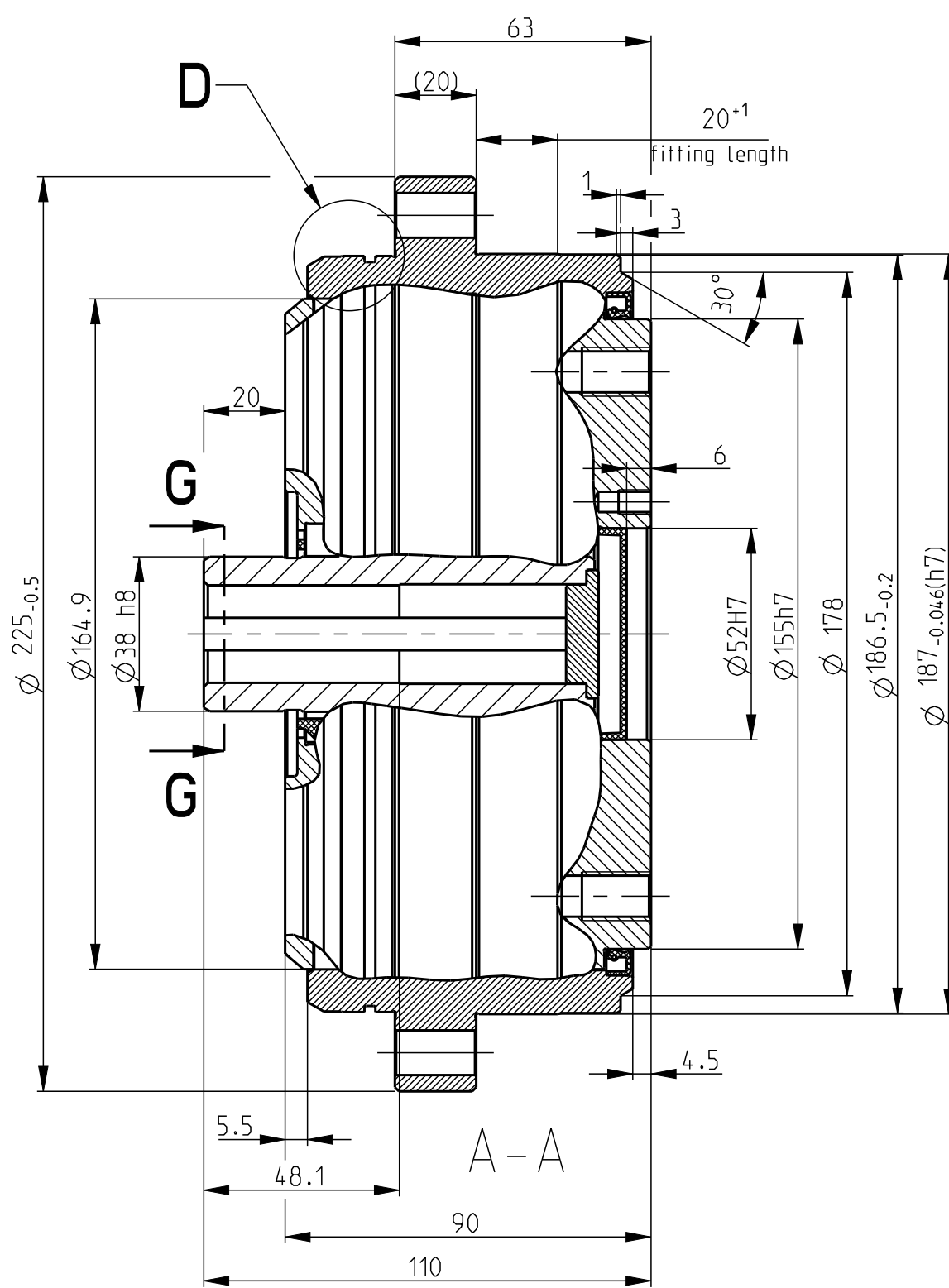
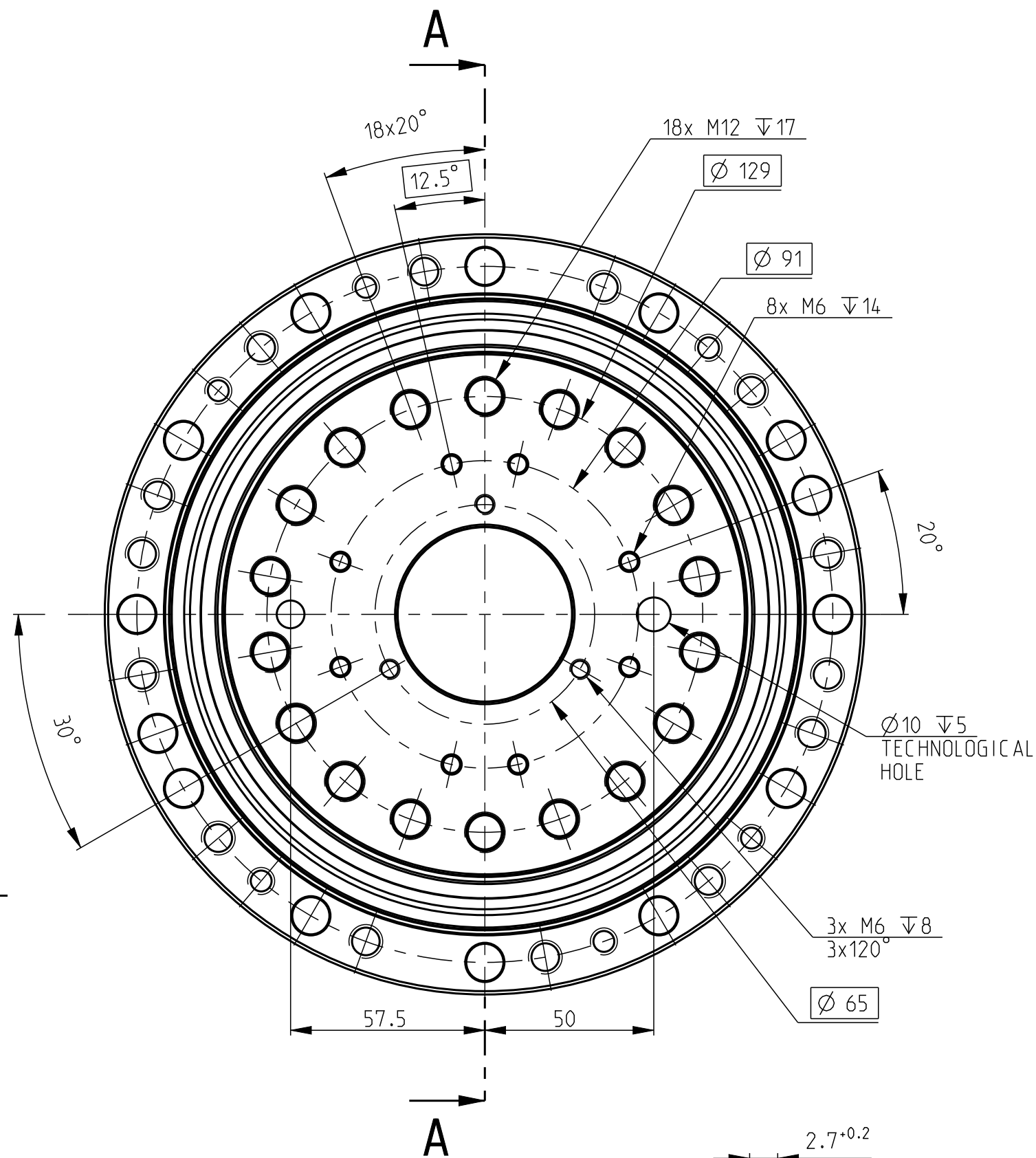




For this drawing we reserve all rights. Without our permission it may neither be copied nor made accessible to third persons. All patent trademarks and other right in this drawing and are expressly reserved by SPINEA Ltd.



Vers/Revs		Change		Date		Signature	
- /c		PR-009-2019		14-Mar-19		V.Fecko	
- /b		oprava toler. 186 h6 na h7		09.04.2014		V.Fecko	
- /a		PR-012-2011		07.10.2013		V.Fecko	
Material		-					
Semi-Product		- -		Pieces		-	
Attachment				Techn.Prepared			
Design Prepared		V.Fecko		07-Oct-13		Techn.Checked	
Design Checked		-				Confirmed	
Manuf.Checked				Valid From		-	
TS 200-i-E-P24				200E			
Description				Type			

		<b>SPINEA</b>	
<b>EXCELLENCE IN MOTION</b>			
		Undimensioned Edges = 0.3x45°	
		Untoleranced Dimensions - STN ISO 2768-mK	
Weight [kg]		17.042	Scale Position 13:20 -
Model Name/ Vers.		200-000E-P24-0585P/ C.2	
Drawing Name/Vers.		200-000E-P24-0585P/ B.3	
Sheet/Sheets		1/1	ARTIKEL -
0-585 P00 #00-2		- /c	
Drawing-No		Vers/Revs	