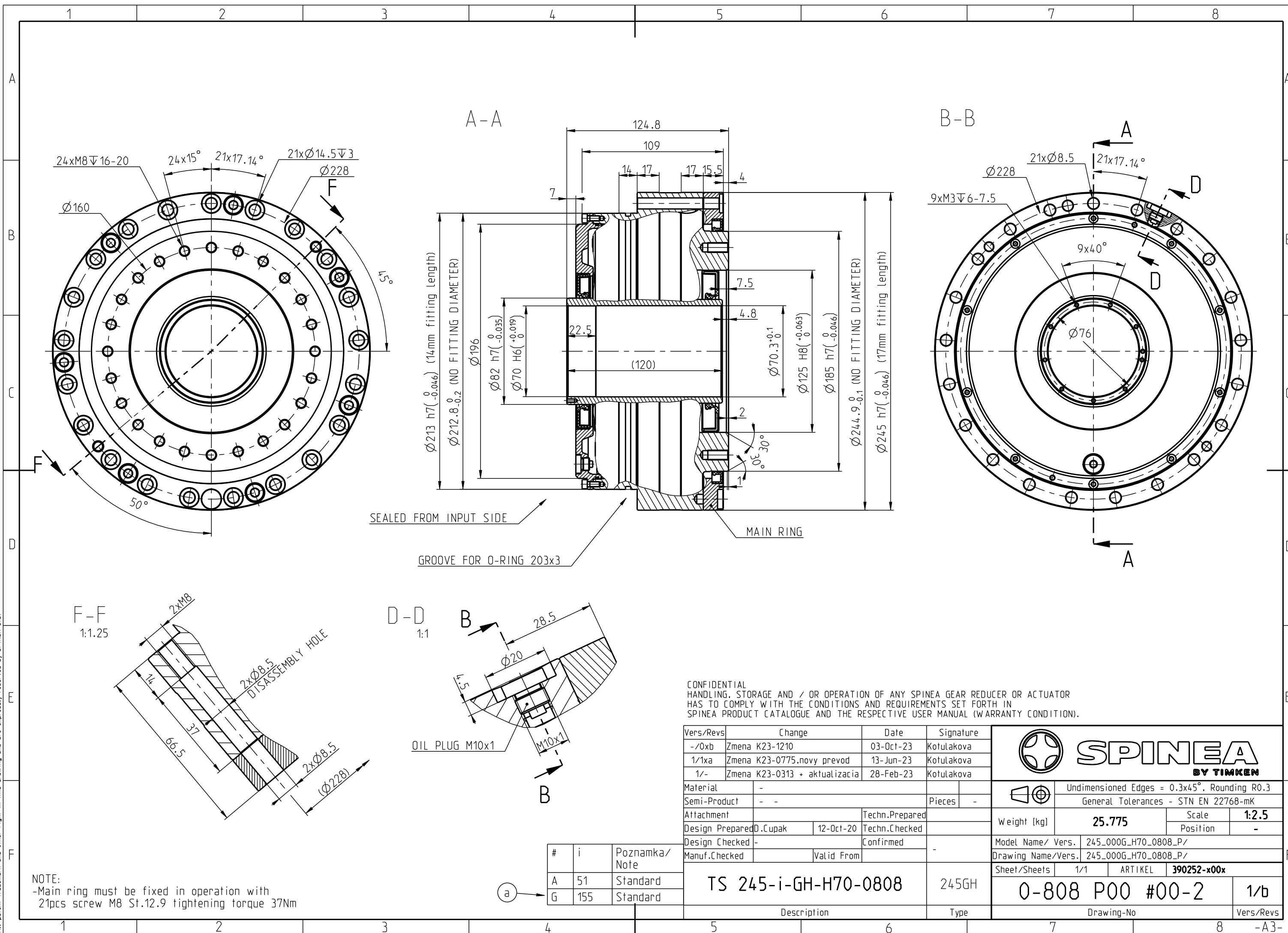


For this drawing we reserve all rights. Without our permission it may neither be copied nor made accessible to third persons. All patent trademarks and other right in this drawing and are expressly reserved by SPINEA Ltd.



NOTE:
-Main ring must be fixed in operation with
21pcs screw M8 St.12.9 tightening torque 37Nm

#	i	Poznamka/ Note
A	51	Standard
G	155	Standard

CONFIDENTIAL
HANDLING, STORAGE AND / OR OPERATION OF ANY SPINEA GEAR REDUCER OR ACTUATOR
HAS TO COMPLY WITH THE CONDITIONS AND REQUIREMENTS SET FORTH IN
SPINEA PRODUCT CATALOGUE AND THE RESPECTIVE USER MANUAL (WARRANTY CONDITION).

Vers/Revs	Change	Date	Signature
-/0xb	Zmena K23-1210	03-Oct-23	Kotulakova
1/1xa	Zmena K23-0775.novy prevod	13-Jun-23	Kotulakova
1/-	Zmena K23-0313 + aktualizacia	28-Feb-23	Kotulakova
Material	-		
Semi-Product	-		Pieces -
Attachment		Techn.Prepared	
Design Prepared	D.Cupak	12-Oct-20	Techn.Checked
Design Checked	-		Confirmed
Manuf.Checked		Valid From	-

TS 245-i-GH-H70-0808	245GH
Description	Type

Undimensioned Edges = 0.3x45°, Rounding R0.3			
General Tolerances - STN EN 22768-mK			
Weight [kg]	25.775	Scale	1:2.5
		Position	-
Model Name/ Vers.	245_000G_H70_0808_P/		
Drawing Name/Vers.	245_000G_H70_0808_P/		
Sheet/Sheets	1/1	ARTIKEL	390252-x00x
0-808 P00 #00-2			1/b
Drawing-No			Vers/Revs