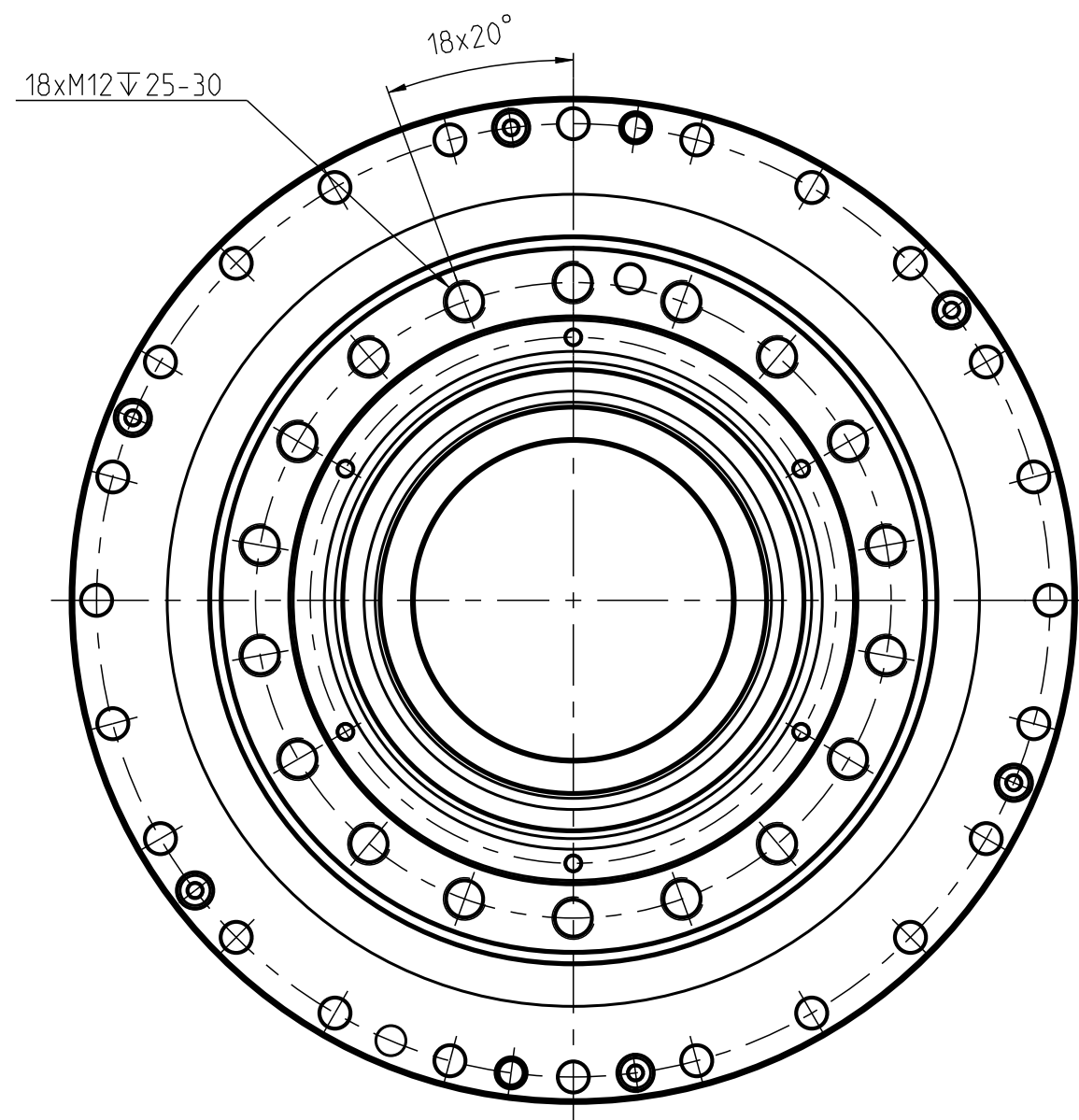
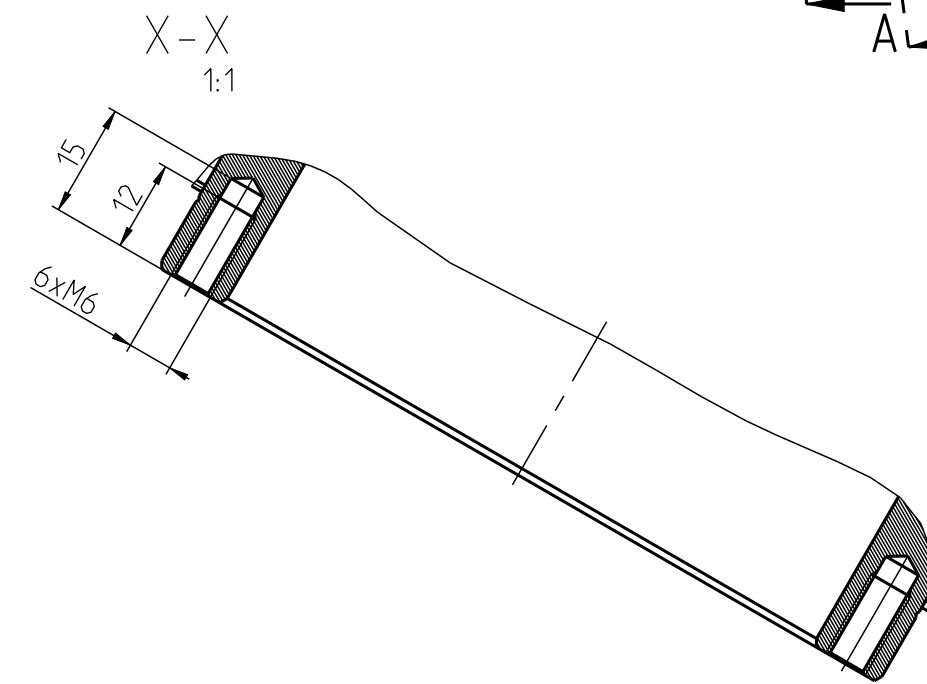
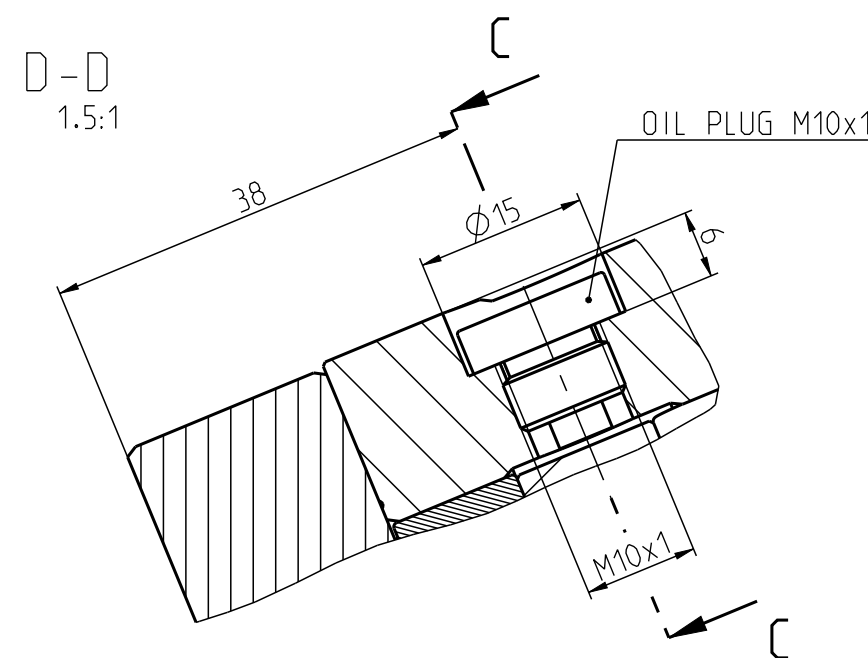
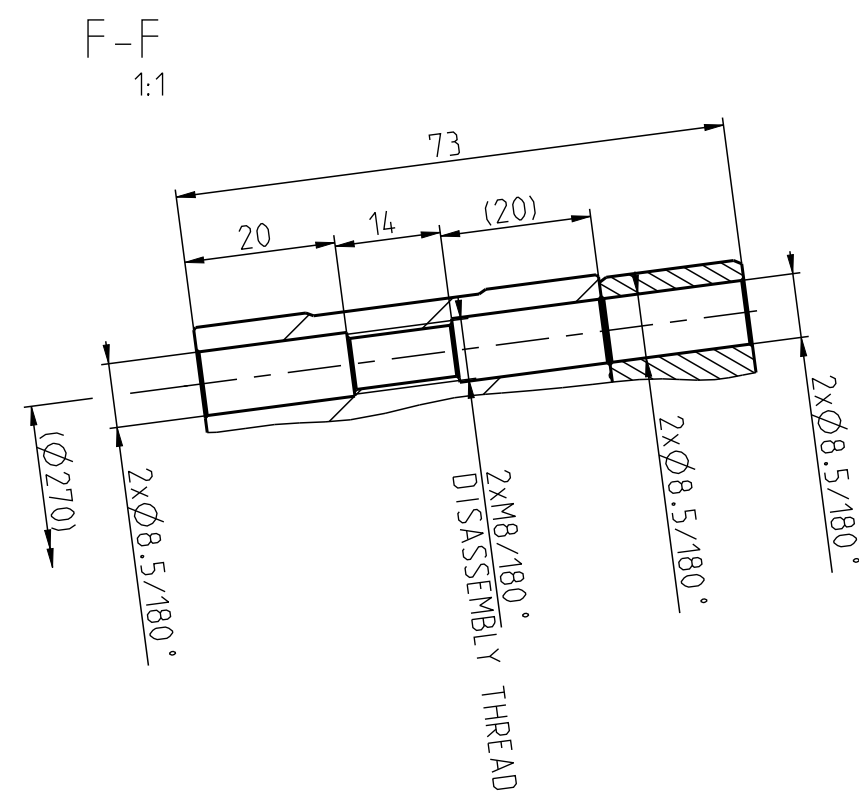
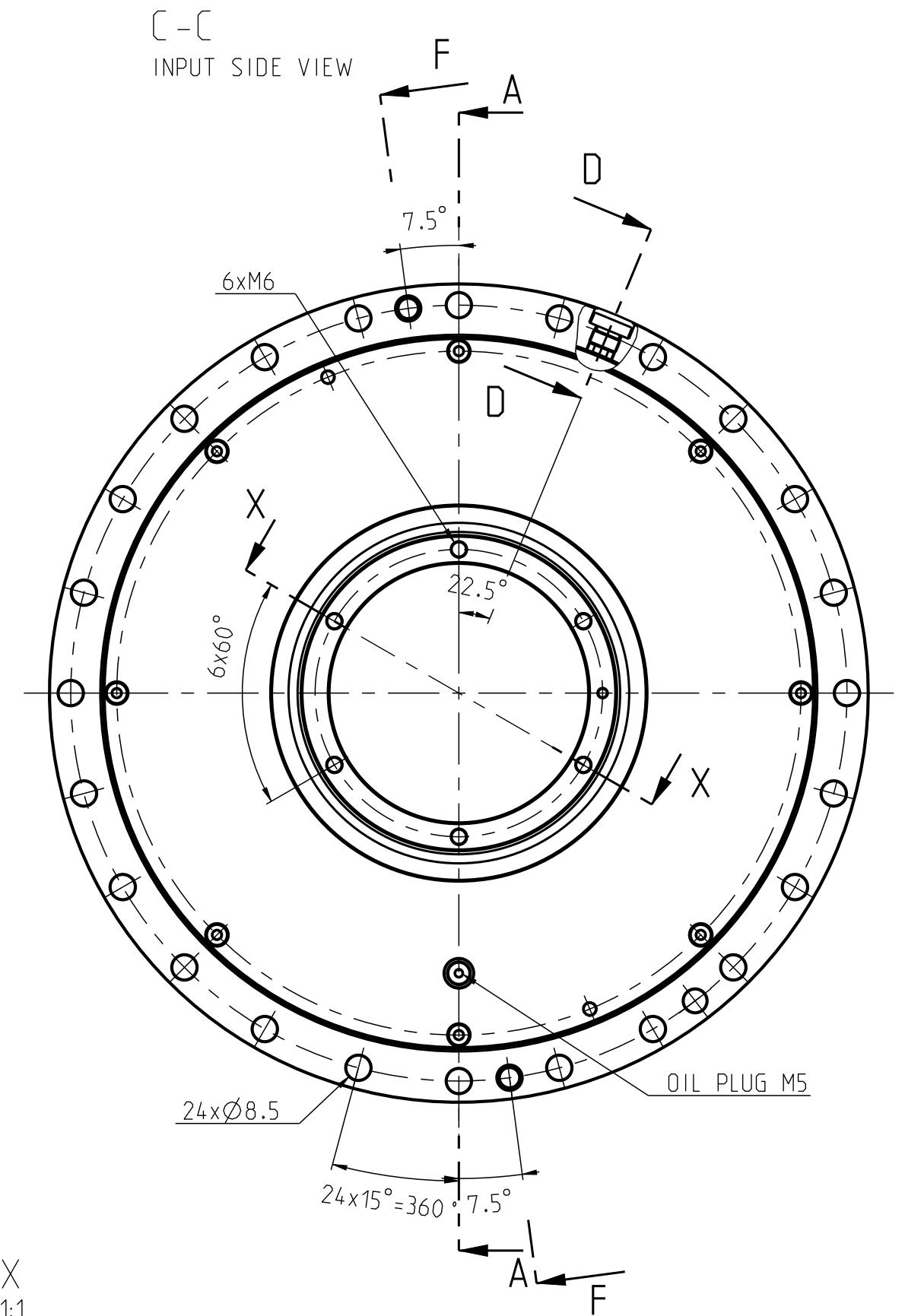
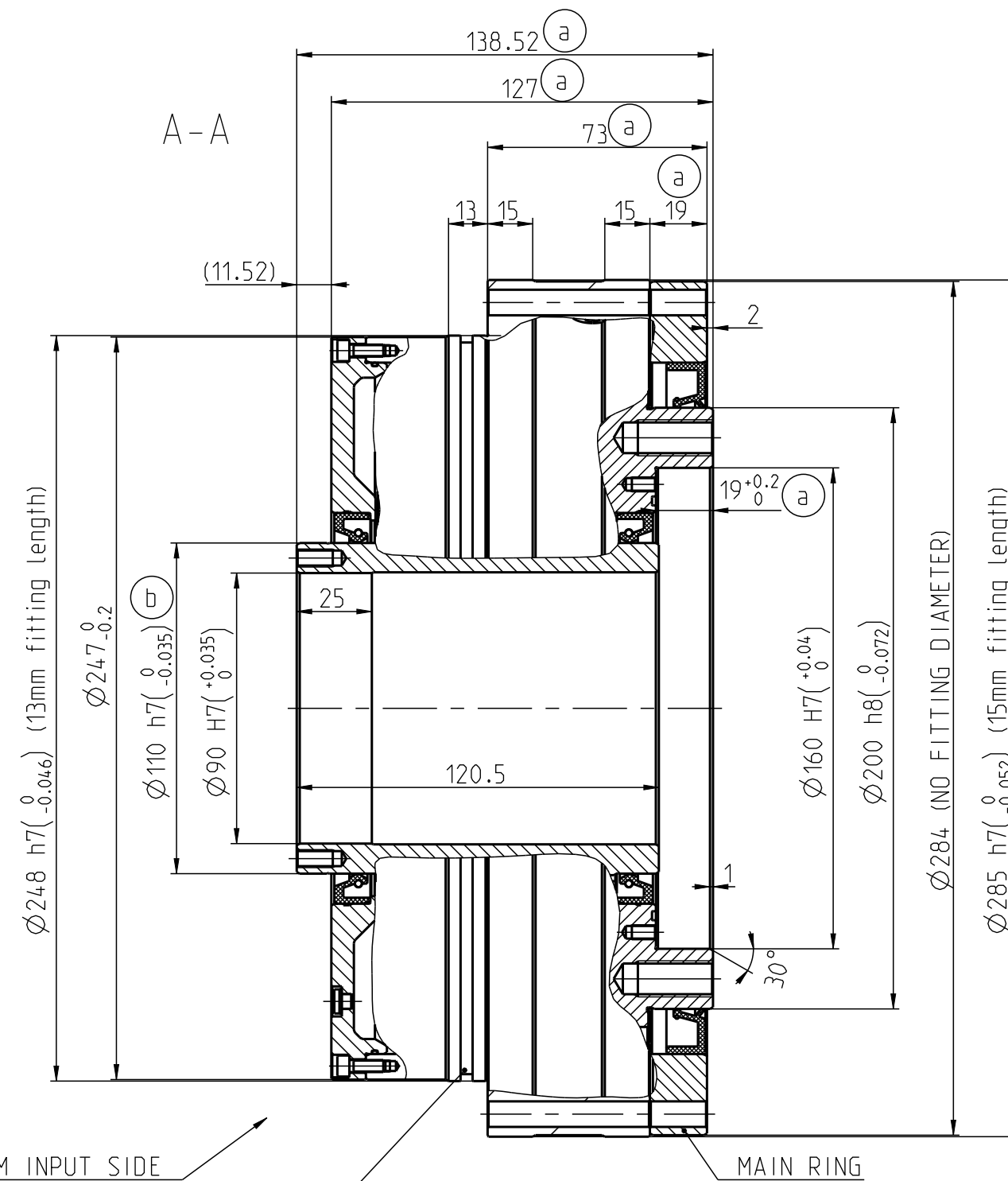


For this drawing we reserve all rights. Without our permission it may neither be copied nor made accessible to third persons. All patent trademark and other right in this drawing and are expressly reserved by SPINEA Ltd.



SEALED FROM INPUT SIDE
GROOVE FOR O-RING 230x3



Note:
- Main ring must be fixed in operation with 24pcs of screw M8

CONFIDENTIAL
HANDLING, STORAGE AND / OR OPERATION OF ANY SPINEA GEAR REDUCER OR ACTUATOR
HAS TO COMPLY WITH THE CONDITIONS AND REQUIREMENTS SET FORTH IN
SPINEA PRODUCT CATALOGUE AND THE RESPECTIVE USER MANUAL (WARRANTY CONDITION).

Vers/Revs	Change	Date	Signature
-/1xc	Change K23-0296	17-Feb-23	Cesar
-/2xb	Change: K22-0322	04-Apr-22	Jackovic
-/5xa	Change: K22-0143	16-Feb-22	Cesar
Material	-		
Semi-Product	-		
Attachment		Techn.Prepared	
Design.Prepared	Cesar	09-Feb-21	Techn.Checked
Design.Checked	Klucar		Confirmed
Manuf.Checked		Valid From	

TS 285-i-G-H90-0419	285GH
Description	Type



Undimensioned Edges = 0.3x45°, Rounding R0.3	
General Tolerances - STN EN 22768-mK	
Weight [kg]	38.079
Scale	1:2
Position	-
Model Name/ Vers.	285_000G_H90_0419P/ -.1
Drawing Name/Vers.	285_000G_H90_0419P/ -.1
Sheet/Sheets	1/1
ARTIKEL	39028-i-#00#
0-419 P00 #00-2	-/c
Drawing-No	Vers/Revs

#	i	Poznamka/ Note
A	55	Standard
F	125	Standard