

Series RG - Servo

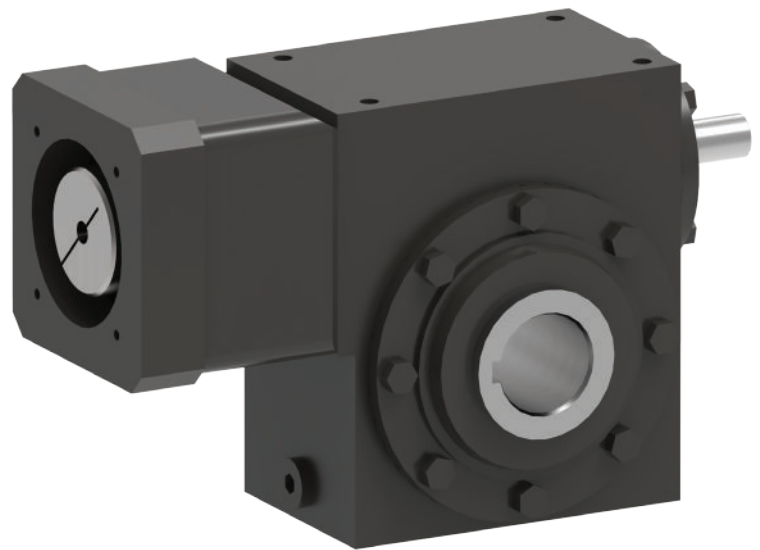
The Series RG-Servo gearbox is an adaptable solution for your motion control needs. Designed for various servo motors, the Series RG-Servo provides you with Cone Drive's double-enveloping worm gear technology and offers multiple output options. Tapered roller output bearings provide the capacity required to handle heavy overhung loads.

PACKAGING | AUTOMATION & ROBOTICS | CONVEYOR | SATELLITE COMMUNICATION

MADE IN
USA

POWERFUL PRECISION

- Double-enveloping worm gearing supported with two input bearings
- Cast iron construction
- Low or standard backlash
- White epoxy or stainless steel paint available
- Competitive pricing
- Best in class lead times
- 5 year warranty



CONFIGURE & DOWNLOAD YOUR MODEL AT www.ConeTools.com

SERIES RG

S P E C I F I C A T I O N S

Center Distance: 1.5 thru 3.5 in

Ratio: 5:1 thru 60:1

Nominal Backlash: 4 - 27 arcmin

Output Torque_{ConstantSpeed} : $\leq 10,800$ lb-in

Output Torque_{Acceleration} : $\leq 11,700$ lb-in


Input Shaft: Single or double extended




Output Shaft: Inch or metric, solid (single or double extended), hollow, shrink disc, mounting flange

Lubricant: Factory filled with synthetic lubricant

I.P. Rating: IP 65



 Cone Drive Operations, Inc.
240 East 12th Street
Traverse City, MI 49684, USA

 +1.888.994.2663
 orders@conedrive.com
 conedrive.com



03232022